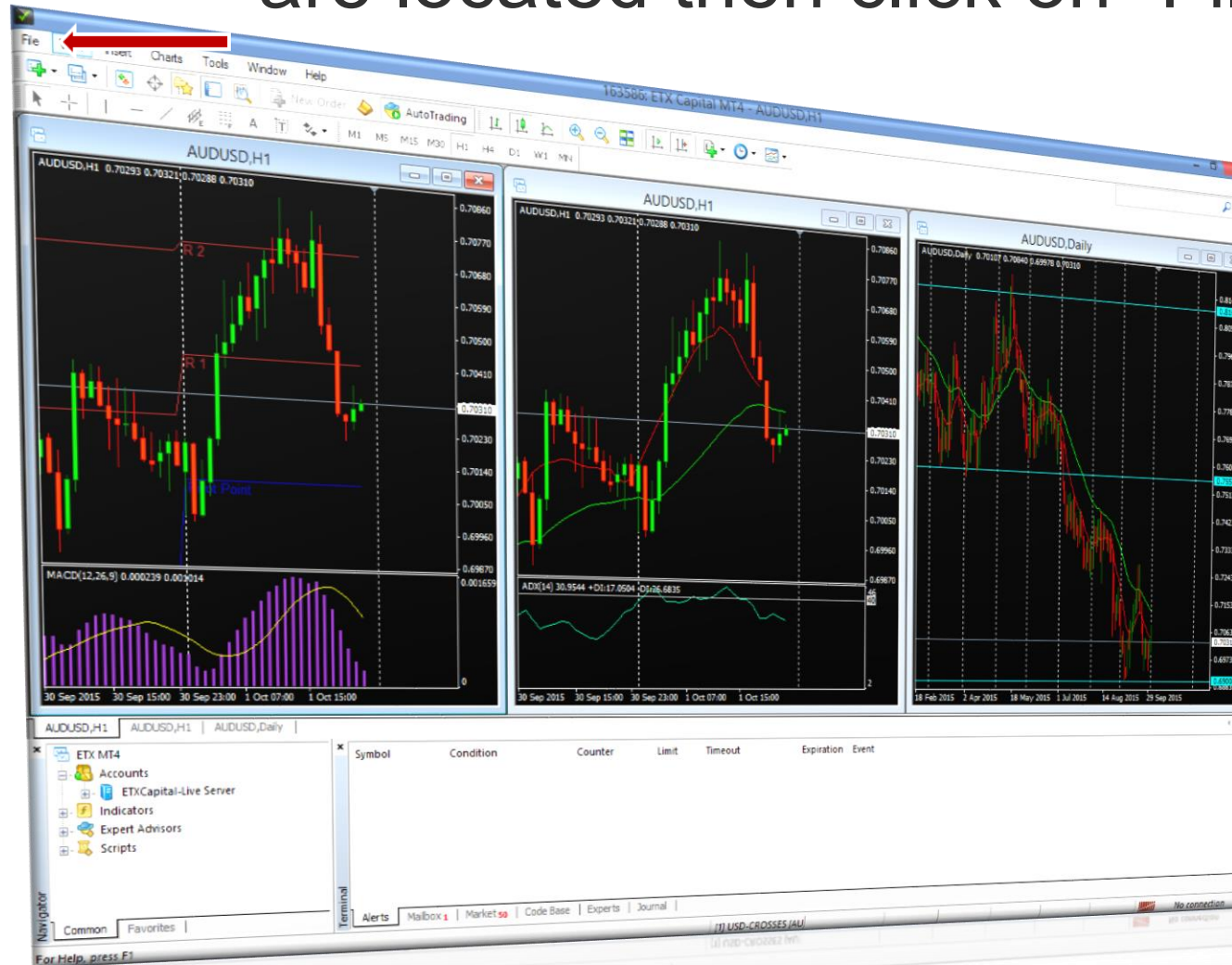


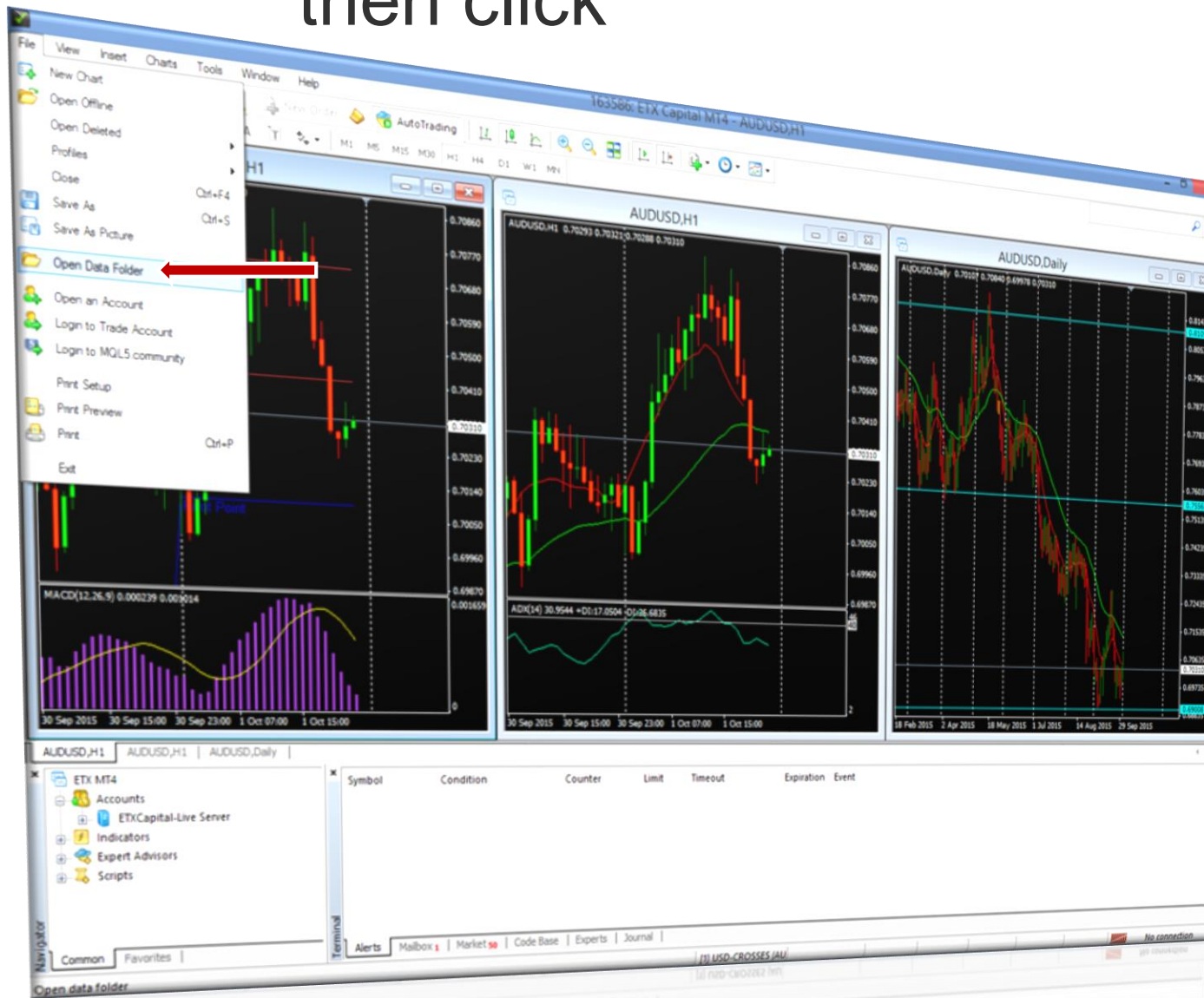
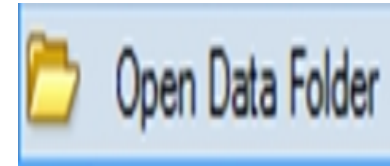


STEP BY STEP ON HOW TO
LOAD GRAPHS ON THE MT4
PLATFORM

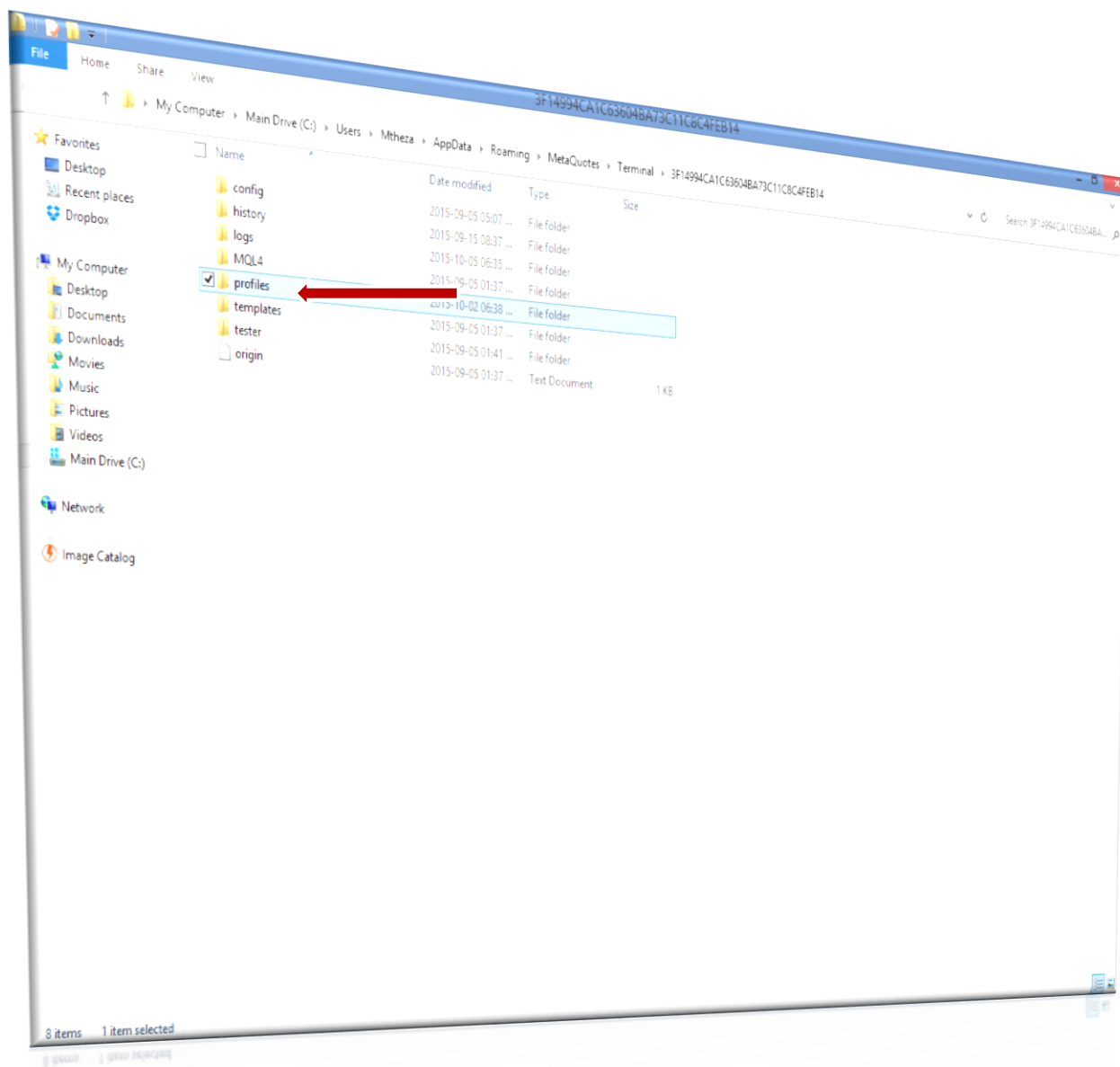
Step 1: Go to the top left of programme where the tabs are located then click on “File”



Step 2: Scroll down to “Open Data Folder” then click



Step 3: Double click on the folder “profiles”



Step 4: Download the missing graph from

<http://recitetraders.com/training/>

Copy and paste the missing folder here
If Prompted say replace all

